

## Functions

- Multi-decoding player  
Support MPEG 1/2/2.5 Layer I/II/III, WMA, WMV, ASF, and WAV
- Digital record/re-read  
Record can be realized through microphone and save WAV and ACT voice documents, both passage and contrast re-read can be selected and digital re-read function here realized.
- Support many languages  
Three languages can be shown (Chinese GB/complex and English), songs information and lyric can be shown meantime.
- FM stereo  
Auto searching and pre-set functions provide you both normal bands and Japan bands, and you also can save your favorable bands.
- Kinds of Tone modes  
Seven modes for your selecting such as NOR, PLAY, POP, CLAS, SOFT, JAZZ, and DBB.
- Kinds of playing modes  
Seven modes: Normal, Repeat One, Folder, Repeat Folder, Repeat All, Random, and Intro.
- Portable USB memory  
Easily and expediently upload and download from Windows, but no need with other program (Windows 98 or above).

- Disk control function

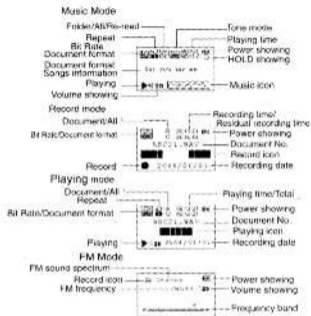
The disk can be divided into two fields with accessory tools, encrypt and conceal one of which to avoid disclosure.

## Declarations

Welcome to choose our produce, please read this manual carefully.

Functions and performance may change without prior notice.

If any difference between produce and this manual, please visit our website



## Operations

### ■ Power On/Off

Both auto and manual Power On are supported  
 Auto Power On: Under power off condition connect the player to PC with USB cable, and the player will be automatically power on and enter into USB mode.

Manual Power Off: Press [M] for 3 seconds, picture-on will be shown and enter into pre-off mode:

Playing: Press [M] for short for pause, and press [M] for 3 seconds to be power off.

Playing: Press [M] for 2 seconds to stop and press [M] for 3 seconds to be power off

Other Modes: Press [M] for 23 seconds to be power off

If the power charges is insufficient the player will be auto power off

### ■ Volume Control

Under music, playing, and FM modes, you may press [VOL] for short to enter into volume control interface.

Press [M] or [M] for short to increase or decrease the volume, or last press to continuously increase or decrease the volume.

### Notes:

When you listen programs by earphone please do not adjust the volume highly, otherwise your ear will be weakened.

### ■ Reset

If the player is power off please press [RESET] to re-start

### ■ Battery

It is used of built-in high power polymer battery



▶ If the battery charges low, "Low Charge" will be shown and the player will be power off automatically.

▶ You may either connect it to PC with USB cable or charge it with accessory charger

▶ During charging "Pulse" icon will be shown, and full icon shows charging completed

▶ Charging should be lasted 4 hours (Note: the first and second time should be lasted 10 hours).

▶ Available time of battery is determined by volume, documents, and key-pressing

▶ The battery can be saved according to users' setting (Off Setting)

▶ The battery can be saved according to users' setting (Display's picture)

▶ You may press [VOL] to set the HOLD under ON condition to avoid any wrong operation consuming battery's power

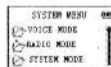
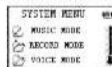
## Menu

### ■ Menu

▶ Enter into: please press [MODE] for short

▶ Guidance: please press [M] or [M] for selection

▶ Setting saving: please press [MODE] for long to save your setting and then to exit



Music mode: play music (refer to "listen to music" for details)

Record mode: sound record (refer to "sound record"

for details)

Playing mode: play recorded files (refer to "recorded files playing" for details)

FM mode: FM frequencies are received (refer to "FM frequency" for details)

System setting: system set (refer to following "system setting")

Remarks:

After music stopped playing press [MODE] for long to enter into system menu

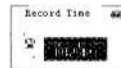
### ■ System setting

Press [M] or [M] to select [system setting], and press [MODE] for short to enter into system menu



### ■ Recording time

Under System Setting you can set up the recording time



Press [VOL] for short you can see Year is shining, and

then press [VOL] for short you can see the Month is shifting. After the item selected you can press [M] or [M] for short to adjust other times, after which press [MODE] for short to exit.

#### ■ Backlight time

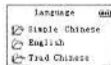
You can choose backlight time to protect OLED and save the battery, but if you use OLED lastly under backlight, the life of OLED will be reduced.



Press [M] or [M] for short to adjust the time between 0-3 seconds, 0 shows the function has been closed and high backlight cannot be used. After adjusting press [MODE] for short to exit.

#### ■ Languages

Under this menu you can by [M] or [M] to select you favorable language, press [MODE] for short for confirmation



#### ■ OFF setting

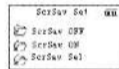
Please refer to "Backlight time" setting  
Power saving mode: you can set up within a special

period (Unit: minutes) since no key-pressing the player will be auto power off; "0" shows the function has been closed.

Sleeping mode: you can set up within a special period (Unit: minutes) since whenever the player will be auto power off, which is suitable for sleeping. Note: once sleeping mode is set it is only valid for one time, after power off the settings will be cleared. Please set it up again if possible.

#### ■ Display's picture

You can set up this function to protect OLED and also save battery.



Press [M] or [M] for short to choose which item you want to set and press [MODE] for short for conformation.

#### ■ Connect to PC

For operations please refer to other modes setting  
Some system (before Windows 2K SP4) cannot support one USB with two disk signs, so after disk was encrypted you should choose which disk will be used, such as "Multi-Disk Connection", "Single Normal Disk" or "Single Encryption Disk", for the purpose that selected disk will be shown in computer.

#### ■ Memory

Here the digit indicates the total capacity, and the

percent here indicates space ratio used.

#### ■ Firmware version

Check with current firmware version

#### ■ Firmware upgrading

After connected with PC, enter into [Firmware Upgrading] to upgrade the firmware (please refer to "Upgrading player driver" for operation)

### Listen to Music

#### ■ Play/Stop

Play: under music mode, connect the earphone to the player, choose your favorable file and press for short  
Stop: press [M] for short

#### ■ Music selection

Press [M] for short to choose the last song, and for long for back up

Press [M] for short to choose the next song, and for long for forward

#### ■ Playing menu

Under playing mode press [MODE] for short to enter into music mode men, and press [M] or [M] to select your favorable mode, and then press [MODE] for confirmation

- Repeat
- Equalizer
- Tempo rate
- Replay
- Replay times
- Replay gap

#### ■ Exit

#### ■ Repeat mode selecting

Under this menu to enter into [repeat mode] interface, by [M] or [M] to select repeat mode

Normal	Play all songs one folder by one folder
Repeat One Folder	Repeat one folder always
Folder All	Play all songs in one folder
Repeat All	Repeat all songs in folder
Random	Repeat all songs
current folder	Randomly play songs in
Intro	Play in order all music in 10 seconds advance in current folder

#### ■ Tone mode selection

Under music playing mode enter into [Tone Mode] and select tone mode by [M] or [M]



#### ■ Playing speed selection

Under music playing mode enter into [Playing Speed] and select playing speed by [M] or [M]

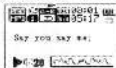
"Forward" means speed up, "Back Up" means slow down, and "0" means normal speed.



## ■ Re-read mode

### 1. A-B Re-read

Under music playing mode enter into [Re-read Mode], when the icon will indicates re-read as following Fig:



When you will see the "A" in above Fig. will be shining waiting entering into re-read mode, press [M] for short for confirm "A", then "A" stop shining, and "B" begins shining waiting for stopping re-reading, press [M] for long to confirm with "B". When re-read icon is fixed, and then A-B will be played repeatedly, after which it will exit from re-read system. During re-read press [M] for short to re-confirm A-B re-read.

### 2. Following Up Function (Without this function under playing mode)

Under A-B re-read mode press [M] for short to enter into following up mode. Re-read icon will be changed into , when user's voice will be recorded, and how long is the time is that of A-B re-read. After that original sound will be played again and the icon will change into , when press [M] for short to enter into contrast function.

Remarks: under this mode press [M] for short to return to A-B re-read mode

### 3. Contrast Function (without this function under playing mode)

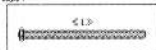
After entering contrast function the re-read icon is just like when your voice will be played. After which the icon is changed into when original sound will be played, after which your voice will be played again and then original sound repeatedly (unlimited by "Re-read times"). Press [MODE] to exit.

Remarks: Under this mode press [M] to return to "Following Up" mode

Under aforesaid three modes press [MODE] for short to exit from re-read mode

## ■ Re-read Times

Under music playing mode, enter into Re-read Times menu to select A-B re-read times by [M] or [M], and then press [MODE] for confirmation.



## ■ Re-read intervals

Under music playing mode, enter into Re-read Interval menu. For operations please refer to "Re-read Times", and the intervals can be set as you like (Unit: seconds)

## ■ Lyric showing

The player supports LRC showing whose name is the same with MP3 music, keep LRC and MP3 in the same list to realize lyric showing.

## Sound Recorded

### ■ Sound recording

Under system menu enter into recording mode



Press [M] for short to start record

Press [M] for short to pause

Press [M] for long to stop

Press [MODE] for long to exit

▶ You can press [REC] for short to enter into Speed Record Mode (When play files please stop that and then enter into Record Mode).

▶ When carry out recording please ensure sufficient battery charges and enough disk space.

▶ The player supports 99 recording files in each folder.

▶ Recorded sounds will be saved in current list set in "REC STOP SUB-MENU/Main List".

▶ "Full Space" shown in the display shows that there is no space to record the latest recording files, please delete other files.

▶ "Full List" shown in the display shows that there have been 99 recorded files in this list, please change into another list.

▶ During recording only [M] or [MODE] can be responded

## ■ Recording type

After record mode has been stopped you can press [MODE] for short to enter into [recording setting], select [record type], and press [MODE] for short to enter into recording type setting.

Quality record	WAV format	quality tone
Long-time record	ACT format	consilient tone
Quality acoustic control record	WAV format	acoustic
Long-time acoustic control record	ACT format	acoustic

Remarks:

1. Acoustic control recording indicates that sound controls recording. If there are not sounds recording will be stopped; only after sounds come data can be recorded to save memory space.

2. Suggest use it in comparative quiet surroundings for good effects obtained

3. Please do not say a word as soon as record begins, after 5 or 6 seconds under back sound begin record, which will provide better effects.

## Play Recorded File

### ■ Play recorded file

Under system menu enter into playing mode

Press [M] for short for recording

Press [M] for short to pause

Press [M] for long to stop

Press [M] for long or [M] to play copy file

Press [MODE] for long to exit from playing mode

Press [VOL] for short to adjust volume



### ■ Playing mode setting

Under playing mode press [MODE] for short to enter into [Playing mode] to select different settings:

- Repeat
- Tempo rate
- Replay
- Exit

For detail operations please refer to operations in its sub-menu

Notes: no following/contrast function here

### FM Frequency

#### ■ FM mode menu

Under this mode you can press [MODE] for short to enter into FM menu



Save order

Delete

Delete All

Normal Band

Save all searched bands in

Delete listening bands

Delete all saved bands

Frequency from FM87 to

108MHz

Japan Band

90MHz

Auto Search

Exit

Frequency from FM76 to

Auto searching

Exit from FM mode

### ■ Auto searching

Press [F1] or [F2] for 2 seconds, the player will at 100KHz search forward or backward, if you want to save some band please press [MODE] for short to enter into sub-menu and select [Band Saving], press [MODE] for short to save your favorable bands in order; if you want other bands re-press [F1] or [F2] lastly, and then the player can continue with searching; if you want stop searching please press [F1] or [F2] for short to stop searching. Auto searching can also realized through sub-menu function.

### ■ Manual searching

Press [F1] for short to search the last

Press [F2] for short to search the next

### ■ Receiving

If one more bands are saved, press [F1] for short to listen one by one; if there is no band saved you can also receive by auto or manual searching.

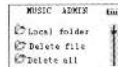
Note: separately 20 bands can be saved in "Normal Band" and "Japan Band"

### File Management [Stop Sub-menu]

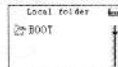
#### ■ Select different menu

Users can place different music files in different lists (Lists should be built prior), to facilitate playing and management. The player supports total 9 first lists.

Under stop mode (Music, record, and playing can select list), press [MODE] for short to enter into [Stop Sub-menu]



Press [MODE] to enter into [Main List]



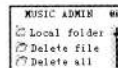
Press [F1] or [F2] to select list, press [MODE] for short to confirm selected list for playing.

Notes:

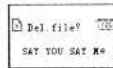
- ▶ Music mode, record mode, and playing mode can be separately set into relative list, i.e. three kinds of modes in different three lists.
- ▶ If there are not music files, the player cannot identify the list.

#### ■ Delete files

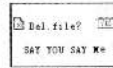
Under stop mode (No stop interface under FM mode), and press [MODE] for short to enter into [Stop Sub-menu].



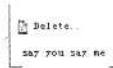
Delete one or all by [F1] or [F2], and press [MODE] for short to enter into delete interface.



Select [YES] or [NO] by [F1] or [F2]



Press [MODE] for short to delete or exit from this interface



Notes:

- ▶ [Delete All] will delete all relative files (For example under music mode all music files will be deleted but not recorded files).

- ▶ Delete interface under FM mode can only arrive are the third step to delete previous saved bands

- ▶ Under music, playing, and FM modes relative files or bands can be deleted

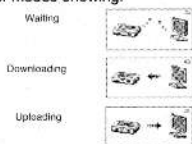
### Install Driver to PC

Place the accessory CD into CD-ROM (or manually drive "set up.exe"), enter into installation interface, click

[Next], after installation route selected click [Next] to start installation. After which click [Close] for completion, Start Program MP3 Player Upgrade, Sound Convert, among which MP3 Player Disk Tool is used for encryption, MP3 Player Upgrade is upgrading tool, and SndConvert is used for transforming audio.

#### Use of USB Disk

- USB showing disk
  - ▶ The player is standard USB that support Windows 98 (driver required) and Windows 2000 above (driver needless) systems, Mac OS 10.3, Linux Redhat 8.0 above.
  - ▶ The player supports USB charge, connect to PC and charge started, under waiting mode press [MODE] for short to exit from USB mode, and selected other mode to enter into.
  - ▶ The player supports Suspend mode, and 99 first folders built in the disk can be identified.
  - ▶ After connected with PC (seconds after) there are three kinds of modes showing:



- Encryption Function:
  - ▶ The USB disk can be divided into two areas in any ratio with accessory tools (two signs will be seen, and SP4 should be installed for Windows 2000, otherwise only one sign will be seen, if you want to find another sign you must select "Single Normal Disk" or "Single Encryption Disk" in "System Setting/Connecting Mode"), encrypt one of which (instead of encryption it will be divided into two disks), keep all contents hidden with passwords to avoid any disclosure.

#### Use of USB Disk

- Dividing and encryption as follows:
  - ▶ Please connect the player to PC, operate accessory installation program tool packet as MP3 Player Disk Tool. Formatting tool, select [Dividing and Encryption] and ensure proper capacity for encrypted disk, and make a user name or password, input the same password in [New Password Confirmation], click [Start] to begin dividing, after which press [Confirm] and re-start dialogue will be shown, and make sure the time and re-start the computer.
  - ▶ After re-started there are two disks (Only one sign for Windows 2000 SP4 and before), select and enter into the encrypted disk.
  - ▶ Carry out "RdiskDecrypt.exe", input user's name and password in the dialogue to open Copied file for right user's name and password.
- Notes:
  - ▶ Files in encrypted disk cannot be recognized by the player

- ▶ Only the user's name and password were input the encrypted disk can be opened
- ▶ When carry out dividing all data will be cleared, please in advance copy all data, either for combining two disks.
- ▶ Please make sure your user's name and password are kept, otherwise your encrypted disk cannot be used anymore, even only after combining these two disks the encrypted disk can be deleted, which will cause files to be lost.

#### ACT Recording File Transformed Into WAV

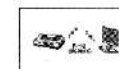
Act file recorded by this player can be transformed into WAV format by accessory installation program tool packet.

Carry out "Sound Converter" program, click "Open" to select ACT need transformed, and click [Open], and then [Transformation] to begin transformation for WAV.

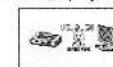
Note: Besides transform ACT into WAV, WAV and MP3 can be transformed either.

#### Upgrading Driver

Upgrade or recover damaged driver with accessory tools. Enter into [System Setting] interface, select [Firmware Upgrading] and press [MODE] for short to enter into firmware upgrading interface (Or directly connect to USB mode according to following procedures).



Carry out [MP3 Player Update] in PC port, and click [New Version Firmware File Selection], after selecting click [Upgrading Started], and the system will begin upgrading. After which the player will show:



Connect the player to PC with USB cable, click right mouse and select [Format] after found movable disk in [My Computer], and select FAT system in [File System], and click [Start] to carry out formatting. Note: Please copy all data before formatting for all data will be deleted after formatting.

- Notes:**
- ▶ Firmware upgrading is used for improving and increasing the performance of player. Normal operation of player will not be influenced if firmware upgrading is not carried out.
  - ▶ The player maybe cannot operated caused by wrongly firmware upgrading! Please do read this manual before operation. It is suggested that choose "FAT File System" to format the disk, otherwise "Wrong Disk" will

be shown in the player.

► After firmware upgraded if the player cannot be used normally please try it again.

### Troubles Solution

If the player cannot be operated normally, please check with:

Troubles	Causes
Cannot be started	Please check with power supply Please check with the procedures
Deadlock	Please press Reset
Cannot be played	Please check with power supply Please set with HOLD mode Ensure that the volume is not in "0", the earphone is correctly connected and clean. Damaged music documents maybe cause different noises even music cannot be played. Please ensure document is complete. Please format with diskette (Please select FAT document system)
Documents cannot be uploaded or downloaded, or no signals shown in computer	Ensure USB is connected exactly Please re-install driving procedure
Record cannot be carried out	Please check with memory is enough Please check with power supply
Abnormal characters appear in display	Ensure right language is selected

### Specification

Items	Specifications
Dimension	30X58X13.3mm (WxHxD)
Memory	128M—2GB
Data speed	USB 2.0 Full speed (read1000K Byte/s, write 750K Byte/s)
Document supported	Music: MPEG 1/2/2.5 Layer I/II/III, WMA, WMV, ASF, WAV Record: ACT, WAV
FM range	76MHz-96MHz / 87MHz-108MHz
SNR	85dB
Max. output power	(L) 10mW + (R)10mW (32 ohm)
Storage medium	Built-in Flash memory
Power supply	3.7V polymer battery
Battery life	MP3 play: seven hours, sound record: eight hours FM: seven hours
Operating temperature	-5℃ - 40℃
System supported	Windows ME/2000/XP, Mac OS 10.3, Linux 2.4.2 and Windows 98 (erection sequence required)

**Please note: Design and characters may change without prior notice**